

# AQUARIUS

DISTRIBUTION

## Product Catalogue Part 1





**Aquarius Rubber T/as **Aquarius Distribution****  
**EST. 1973**

We stand for **Excellence**,  
**Reliability** and **Quality**

The best products, fastest delivery and  
extraordinary customer service.

**Australian Owned**

# Contents



## Lead Alternative

Leadax	4
--------	---

## Aquaseal

Aquadapt	6
FlashRite	7
Round	8
Original	9
Special	10
Square Flasher	11
MultiSeal	12
Drainer	13
Wall Flasher	14

## Aquaseal Versatile

LDX	15
Enviro-Lead	16
Natural Lead	17
Enviro-Lead Square Flasher	18
Aluminium Square Flasher	18
Aluminium – Standard	19
Aluminium – A° Series	20
Flexatile	21

## Pipe Flashing Accessories

Retrofit Clips	22
Double-sided Foam Tape	22

## Specialised Products

Expansion Strip Joint	23
Multi-purpose Rubber Ties	24
Anti-vibration Waffle Pads	25

## Pipe Couplings

Premium Pipe Couplings	26
Octopus Pipe Couplings	27

## Washers & Grommets

Moulded Washers	28
Bonded Washers	29
Embossed Washers	30
Grommets	30





# Leadax<sup>®</sup>

## The new lead

Leadax, a major success worldwide, is now available in Australia, exclusively from Aquarius Distribution. Leadax has been adopted as the true replacement to lead. With its superior features, Leadax is non-toxic, easier to install, quicker to install, and 75% lighter than lead. And the best thing is, Leadax is installed in the exact same way as lead. Leadax is suitable for both tiled and metal roofs.

For more information visit [www.leadax.com.au](http://www.leadax.com.au)



## LEAD ALTERNATIVE

# Leadax

### Benefits

- **Non-toxic** – Unlike traditional water-resistant materials, Leadax does not contain any heavy metals.
- **Recycled materials** – The basic raw material is recycled PVB. PVB is the foil that is used in laminated glass (e.g. car windows or safety glass).
- **Light weight** – Leadax is much lighter than lead and therefore easier to use.
- **Cheaper** – Leadax is faster to install, resulting in lower installation costs.



Code	Size	Weight	Colour
LDX300B - 25206300	300mm x 6m	7.40kg	Black
LDX400B - 25206400	400mm x 6m	9.50kg	Black
LDX600B - 25206600	600mm x 6m	14.70kg	Black
LDX300G - 25106300	300mm x 6m	7.40kg	Grey
LDX400G - 25106400	400mm x 6m	9.50kg	Grey
LDX600G - 25106600	600mm x 6m	14.70kg	Grey
LDX300T - 25306300	300mm x 6m	7.40kg	Terracotta
LDX400T - 25306400	400mm x 6m	9.50kg	Terracotta
LDX600T - 25306600	600mm x 6m	14.70kg	Terracotta



### Available Accessories

#### Leadax Sealant



**Code:**  
LDXSEAL - 29000110

All purpose adhesive for fixing Leadax to the base material or for overlapping.

#### Leadax Scissors



**Code:**  
LDXSCISSORS - 29000210

Cut Leadax to size quickly and easily.

#### Leadax Roller



**Code:**  
LDXROLLER - 29000220

Mould Leadax around roof tiles. Easy to use for professional results.

#### Leadax Fixing Clip



**Code:**  
LDXCLIPS - 29000120

Leadax Fixing Clips allow you to attach Leadax into above ground masonry joints quickly and easily.





AQUASEAL



# Aquadapt

## Benefits

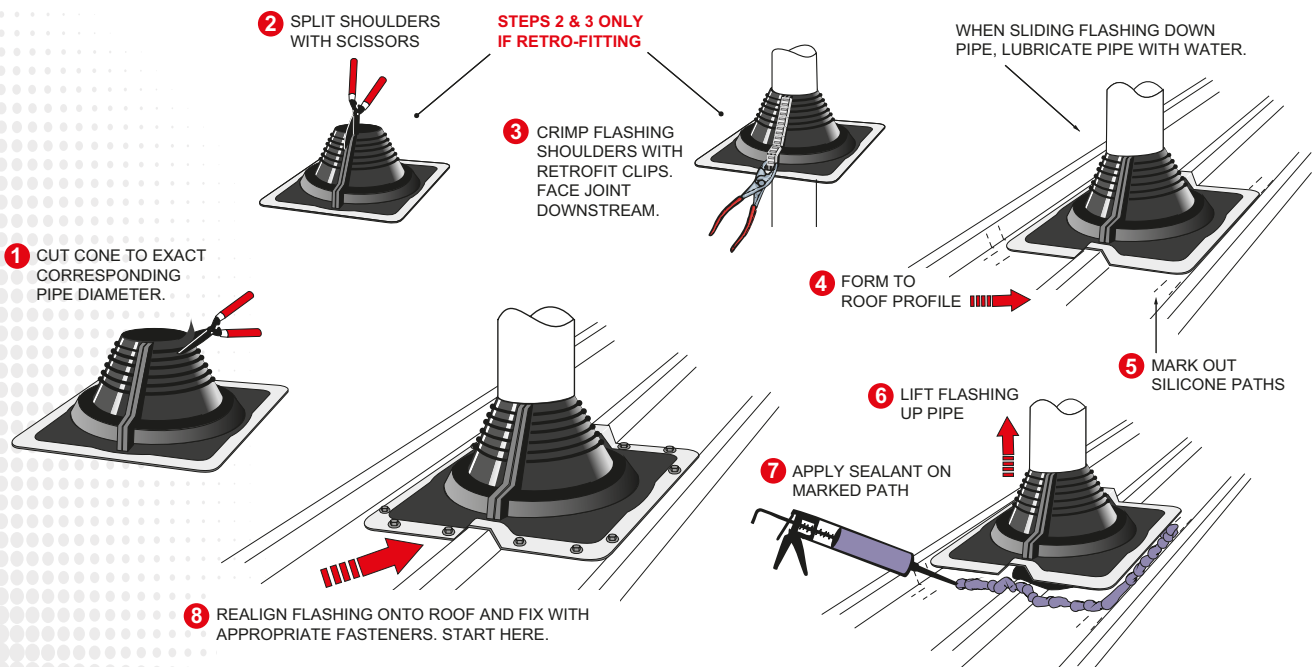
- Suitable for both standard and retrofit application
- Wraps around existing pipes
- Suitable for repairs
- Full range of sizes
- Polymer is Ozone and UV resistant
- 20 Year warranty
- EPDM Black BAL Rating 12.5 & Silicone Red BAL Rating 29



Aquaseal Aquadapt	Black EPDM Code	Red Silicone Code	Metric: Pipe Size (25° roof pitch)	Metric: Pipe Size (45° roof pitch)	Imperial: Pipe Size (25° roof pitch)	Imperial: Pipe Size (45° roof pitch)	Base size	Max retrofit clips required	Box Qty
No.1	AAE1B8-40	AAS1R8-40	8-50mm	8-40mm	1/8" - 2"	1/8" - 1 1/2"	115x115mm	4	20
No.2	AAE2B10-70	AAS2R10-70	10-90mm	10-70mm	3/8" - 3 3/8"	3/8" - 2 3/4"	155x155mm	5	20
No.3	AAE3B40-90	AAS3R40-90	40-100mm	40-90mm	1 1/2" - 4"	1 1/2" - 3 1/2"	203x203mm	5	10
No.4	AAE4B75-135	AAS4R75-135	75-150mm	75-135mm	3" - 6"	3" - 5 1/2"	255x255mm	6	10
No.5	AAE5B125-180	AAS5R125-180	125-200mm	125-180mm	5" - 8"	5" - 7"	305x305mm	6	10
No.6	AAE6B145-230	AAS6R145-230	145-250mm	145-230mm	6" - 10"	6" - 9"	355x355mm	7	10
No.7	AAE7B195-250	AAS7R195-250	195-300mm	195-250mm	8" - 11 1/2"	8" - 10"	432x432mm	7	5
No.8	AAE8B230-380	AAS8R230-380	230-380mm	230-355mm	9" - 15"	9" - 14"	540x600mm	9	5
No.9	AAE9B315-450	AAS9R315-450	315-500mm	315-450mm	12 1/2" - 19 1/2"	12 1/2" - 17 3/4"	650x720mm	11	1
No.10	AAE10B400-730	AAS10R400-730	400-750mm	400-630mm	15 3/4" - 29 1/2"	15 3/4" - 24 5/8"	965x995mm	15	1

EPDM will withstand constant temperatures of -40°C (-40°F) to 115°C (239°F) Silicone will withstand constant temperatures of -50°C (-58°F) to 200°C (392°F)  
 \*BAL rated for EPDM Black & Silicone Red

## Installation Overview





AQUASEAL



# FlashRite

## Benefits

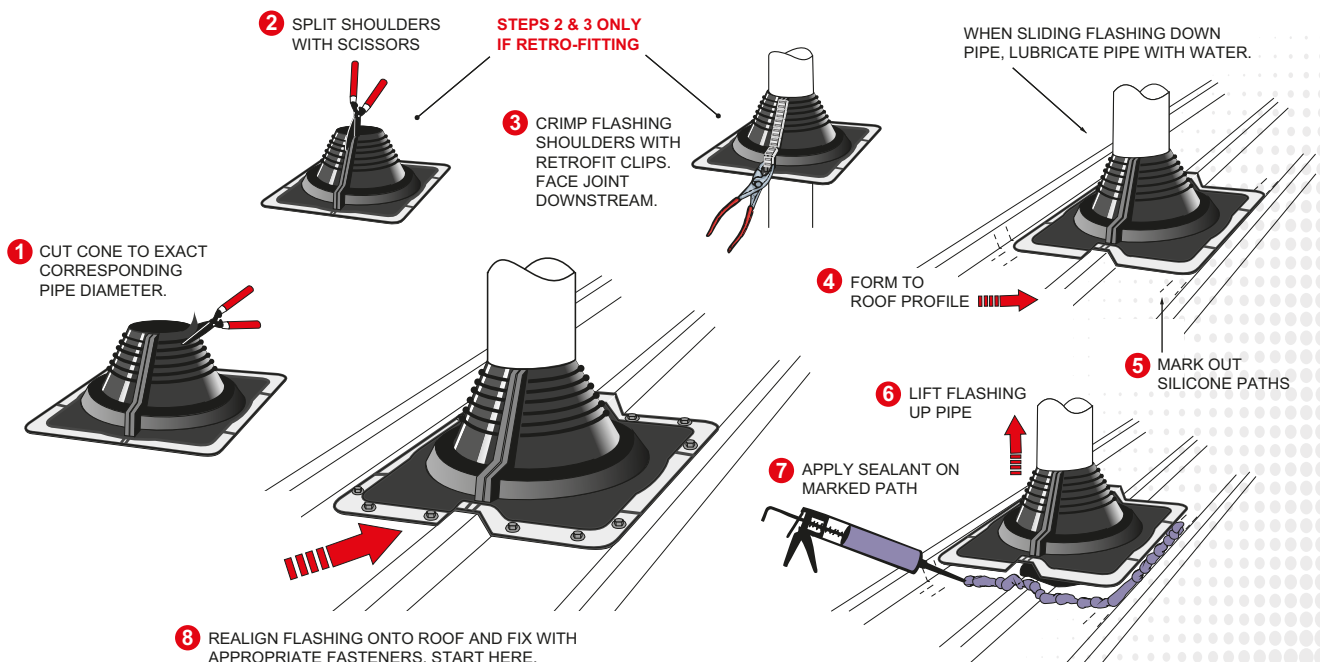
- Suitable for both standard and retrofit application
- Wraps around existing pipes
- Suitable for repairs
- Full range of sizes
- Polymer is Ozone and UV resistant
- 20 Year warranty
- EPDM Black BAL Rating 12.5 & Silicone Red BAL Rating 29



Aquaseal FlashRite	Black EPDM Code	Red Silicone Code	Grey EPDM Code	Metric: Pipe Size (25° roof pitch)	Metric: Pipe Size (45° roof pitch)	Imperial: Pipe Size (25° roof pitch)	Imperial: Pipe Size (45° roof pitch)	Base size	Max retrofit clips required	Box Qty
Mini	AFE0B3-20	AFS0R3-20	AFE0G3-20	3-25mm	3-20mm	1/8" - 1"	1/8" - 3/4"	80x80mm	n/a	20
No.1	AFE1B5-45	AFS1R5-45	AFE1G5-45	5-50mm	5-40mm	1/5" - 2"	1/5" - 1 1/2"	120x120mm	n/a	20
No.2	AFE2B25-70	AFS2R25-70	AFE2G25-70	25-70mm	25-65mm	1" - 2 3/4"	1" - 2 1/2"	163x163mm	3	20
No.3	AFE3B50-100	AFS3R50-100	AFE3G50-100	50-100mm	50-80mm	2" - 4"	2" - 3 1/2"	210x210mm	4	10
No.4	AFE4B90-150	AFS4R90-150	AFE4G90-150	90-150mm	90-130mm	3 1/2" - 6"	3 1/2" - 5"	260x260mm	5	10
No.5	AFE5B125-200	AFS5R125-200	AFE5G125-200	125-200mm	125-165mm	5" - 8"	5" - 6 1/2"	313x313mm	5	10
No.6	AFE6B150-230	AFS6R150-230	AFE6G150-230	150-250mm	150-230mm	6" - 10"	6" - 9"	370x370mm	6	10
No.7	AFE7B200-300	AFS7R200-300	AFE7G200-300	195-300mm	195-255mm	8" - 11 1/2"	8" - 10"	440x440mm	7	5

EPDM will withstand constant temperatures of -40°C (-40°F) to 115°C (239°F) Silicone will withstand constant temperatures of -50°C (-58°F) to 200°C (392°F)  
 \*BAL rated for EPDM Black & Silicone Red

## Installation Overview





## Round

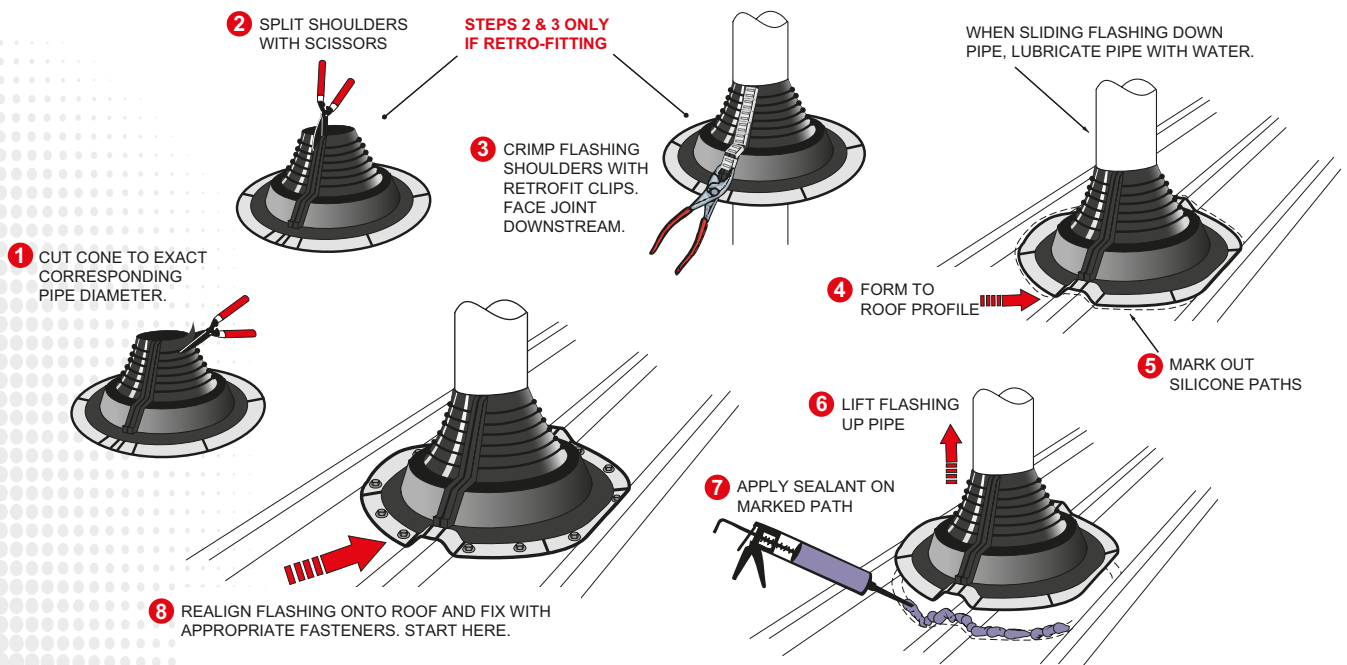
### Benefits

- Suitable for both standard and retrofit application
- Wraps around existing pipes
- Suitable for repairs
- Full range of sizes
- Polymer is Ozone and UV resistant
- 20 Year warranty
- EPDM Black BAL Rating 12.5 & Silicone Red BAL Rating 29

Aquaseal Round	Black EPDM Code	Red Silicone Code	Grey EPDM Code	Metric: Pipe Size (25° roof pitch)	Metric: Pipe Size (45° roof pitch)	Imperial: Pipe Size (25° roof pitch)	Imperial: Pipe Size (45° roof pitch)	Base size	Max retrofit clips required	Box Qty
Mini	ARE0B0-25	ARS0R0-25	ARE0G0-25	0-25mm	0-25mm	0"-1"	0"-1"	90mm	n/a	20
No.1	ARE1B0-40	ARS1R0-40	ARE1G0-40	0-40mm	0-40mm	0"-1½"	0"-1½"	125mm	3	20
No.2	ARE2B12-70	ARS2R12-70	ARE2G12-70	12-70mm	12-70mm	½"- 3½"	½"- 3½"	170mm	4	20
No.3	ARE3B25-100	ARS3R25-100	ARE3G25-100	25-100mm	25-100mm	1"-4"	1"-4"	222mm	4	10
No.4	ARE4B50-150	ARS4R50-150	ARE4G50-150	50-150mm	50-140mm	2"-6"	2"-5½"	272mm	6	10
No.5	ARE5B75-180	ARS5R75-180	ARE5G75-180	75-180mm	75-150mm	3"-7"	3"-6"	322mm	6	10
No.6	ARE6B100-215	ARS6R100-215	ARE6G100-215	100-215mm	100-165mm	4"-8½"	4"-6½"	375mm	8	10
No.7	ARE7B125-305	ARS7R125-305	ARE7G125-305	125-305mm	125-280mm	5"-12"	5"-11"	467mm	9	10

EPDM will withstand constant temperatures of -40°C (-40°F) to 115°C (239°F) Silicone will withstand constant temperatures of -50°C (-58°F) to 200°C (392°F)  
 \*BAL rated for EPDM Black & Silicone Red

## Installation Overview







**AQUASEAL**



# Original

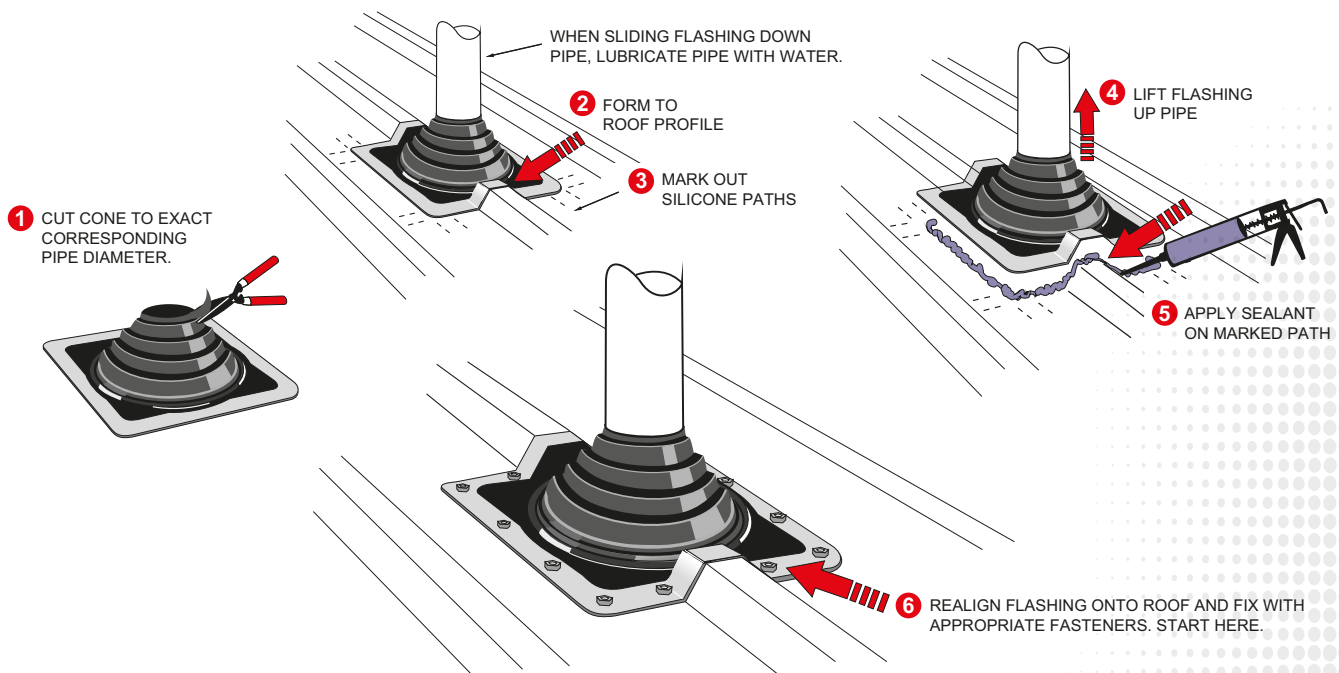
## Benefits

- Full range of sizes
- Polymer is Ozone and UV resistant
- 20 Year warranty
- EPDM Black BAL Rating 12.5

Aquaseal Original	Black EPDM Code	Metric: Pipe Size (25° roof pitch)	Metric: Pipe Size (45° roof pitch)	Imperial: Pipe Size (25° roof pitch)	Imperial: Pipe Size (45° roof pitch)	Base size	Box Qty
No.2	AOE2B	25-90mm	25-75mm	1" - 3½"	1" - 3"	155x155mm	20
No.3	AOE3B	50-127mm	50-115mm	2" - 5"	2" - 4½"	203x203mm	10
No.4	AOE4B	90-165mm	90-140mm	3½" - 6½"	3½" - 5½"	255x255mm	10
No.5	AOE5B	130-216mm	130-190mm	5" - 8½"	5" - 7½"	305x305mm	10
No.6	AOE6B	165-267mm	165-245mm	6½" - 10½"	6½" - 9½"	355x355mm	10
No.7	AOE7B	215-330mm	215-305mm	8½" - 12½"	8½" - 11½"	432x432mm	5

EPDM will withstand constant temperatures of -40°C (-40°F) to 115°C (239°F) \*BAL rated for EPDM Black

## Installation Overview





# Special

## Benefits

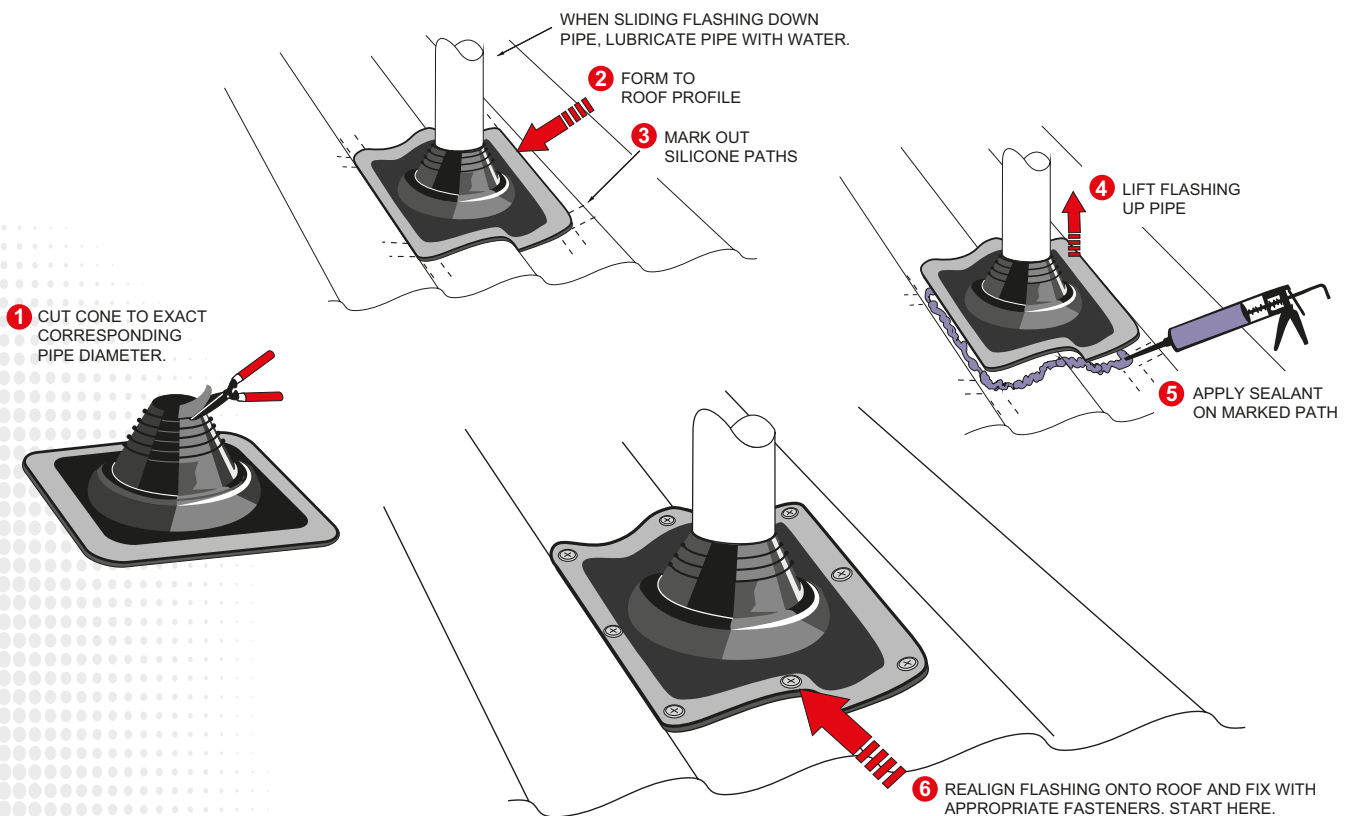
- No.1 Special is great for solar, TV antenna and PVC vent pipes. It also has two cable entry points for electrical and coaxial cables.
- No.2 Special is designed for 50mm vent pipes. Does not require to be cut to size, just slip, fit & fasten.
- Polymer is Ozone and UV resistant
- 20 Year warranty
- EPDM Black BAL Rating 12.5 & Silicone Red BAL Rating 29



Aquaseal Special	Black EPDM Code	Red Silicone Code	Grey EPDM Code	Metric: Pipe Size (25° roof pitch)	Metric: Pipe Size (45° roof pitch)	Imperial: Pipe Size (25° roof pitch)	Imperial: Pipe Size (45° roof pitch)	Base size	Box Qty
No.1	ASE1B5-45	ASS1R5-45	N/A	5-50mm	5-40mm	½" - 2"	½ - 1½"	115x115mm	20
No.2	ASE2B50-80	N/A	ASE2G50-80	50-80mm	50-65mm	2" - 2½"	2" - 2½"	155x155mm	20

EPDM will withstand constant temperatures of -40°C (-40°F) to 115°C (239°F) Silicone will withstand constant temperatures of -50°C (-58°F) to 200°C (392°F)  
 \*BAL rated for EPDM Black & Silicone Red

## Installation Overview





AQUASEAL



# Square Flasher

## Benefits

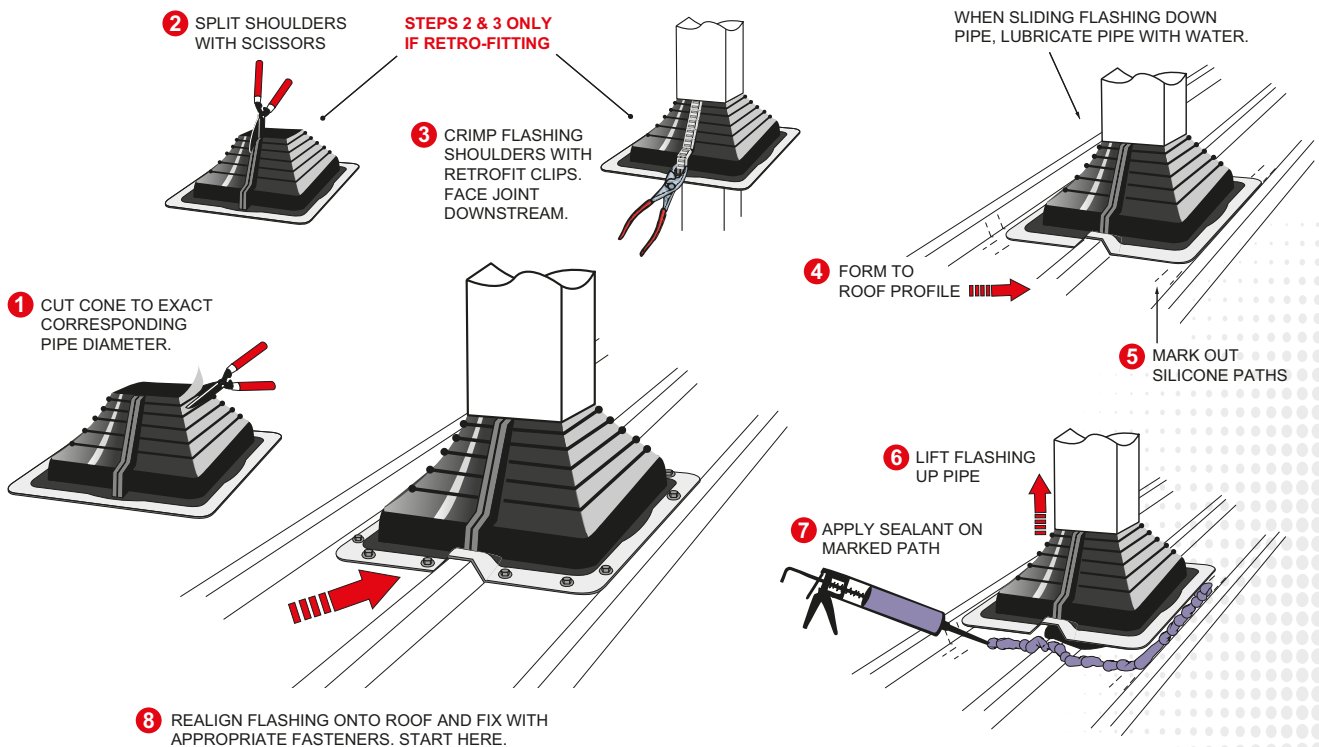
- Suitable for both standard and retrofit application
- Available in two sizes
- Flash square pipes from 25 to 150mm
- Polymer is Ozone and UV resistant
- 20 Year warranty
- EPDM Black BAL Rating 12.5



Aquaseal Square Flasher	Black EPDM Code	Grey EPDM Code	Metric: Pipe Size (25° roof pitch)	Metric: Pipe Size (45° roof pitch)	Imperial: Pipe Size (25° roof pitch)	Imperial: Pipe Size (45° roof pitch)	Base size	Max retrofit clips required	Box Qty
No.3	ASQE3B25-100	ASQE3G25-100	25-100mm	25-75mm	1" - 4"	1" - 3"	210x210mm	5	10
No.5	ASQE5B100-150	ASQE5G100-150	100-150mm	100-150mm	4" - 6"	4" - 6"	313x313mm	6	10

EPDM will withstand constant temperatures of -40°C (-40°F) to 115°C (239°F) \*BAL rated for EPDM Black

## Installation Overview







**AQUASEAL**



# MultiSeal

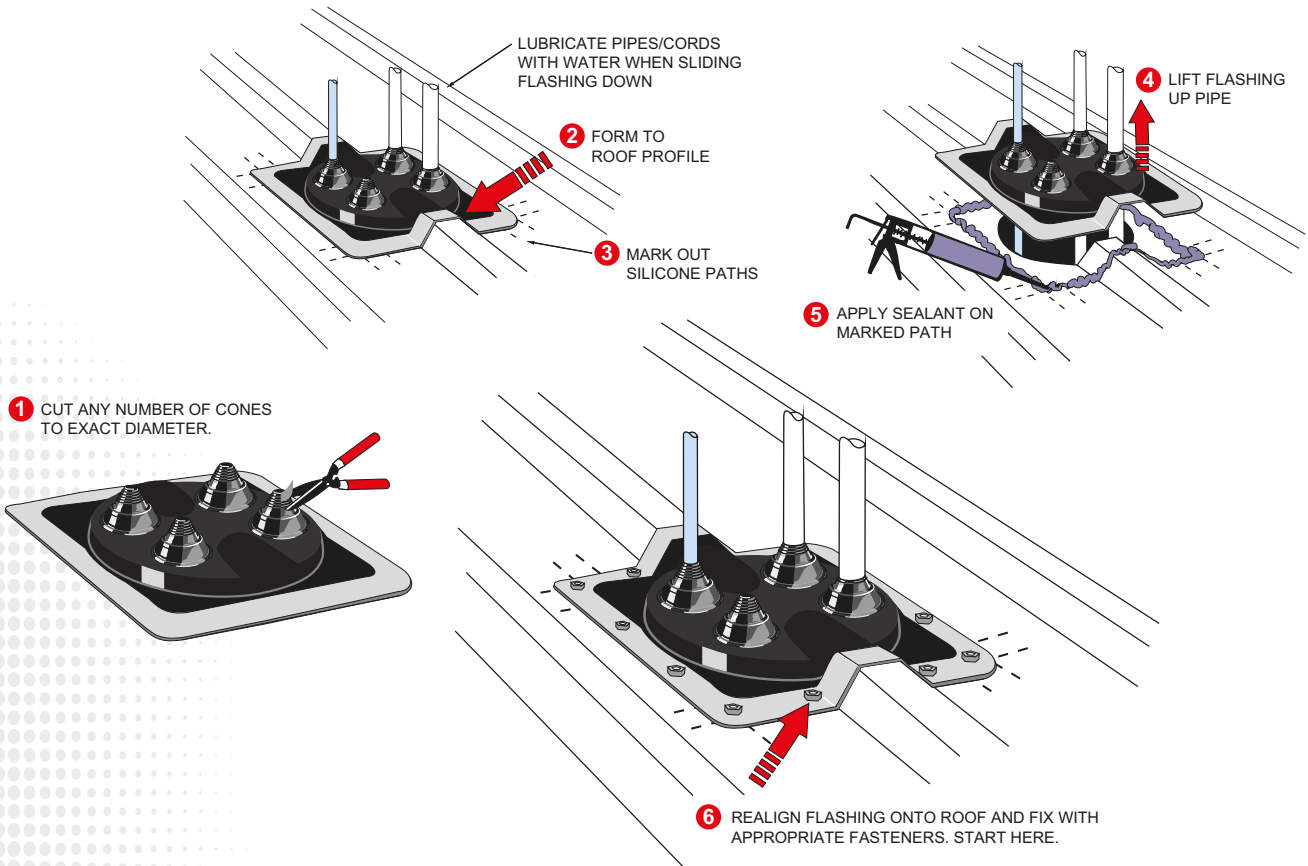
## Benefits

- Ideal for multiple penetrations (electrical, water, heating and air-conditioning)
- Makes multiple sealing simple.
- Polymer is Ozone and UV resistant
- 20 Year warranty
- EPDM Black BAL Rating 12.5

Aquaseal MultiSeal	Black EPDM Code	Metric: Pipe Size (25° roof pitch)	Metric: Pipe Size (45° roof pitch)	Imperial: Pipe Size (25° roof pitch)	Imperial: Pipe Size (45° roof pitch)	Base size	Box Qty
No.5	AME5B	5-40mm x 4ports	5-40mm x 4ports	1/8" - 1 1/2" x 4ports	1/8" - 1 1/2" x 4ports	305x305mm	10

EPDM will withstand constant temperatures of -40°C (-40°F) to 115°C (239°F) \*BAL rated for EPDM Black

## Installation Overview





# Drainer

## Benefits

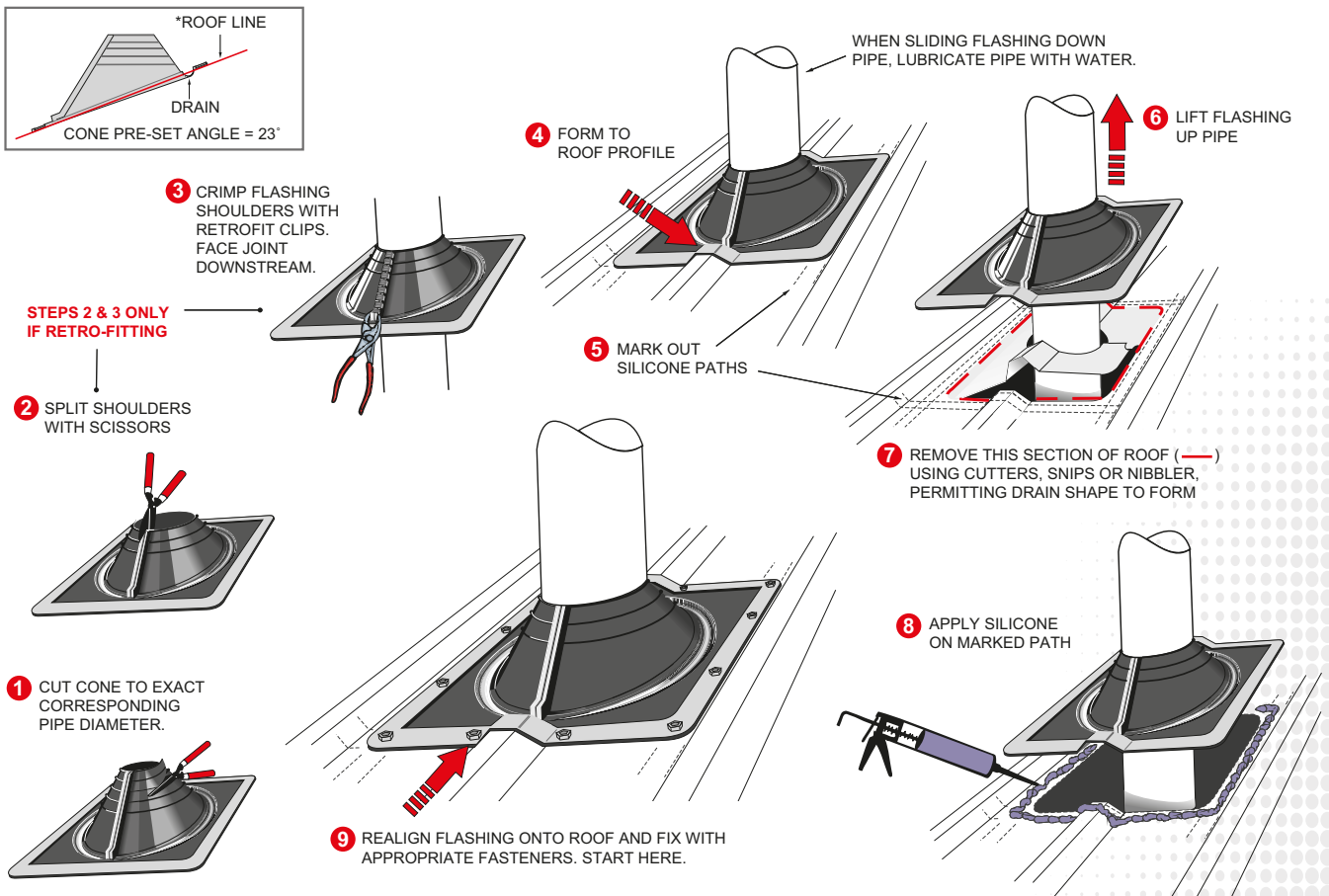
- Suitable for both standard and retrofit application
- Moulded gutter reduces damming
- Suitable for extreme roof pitches
- Can flash a 200mm O.D. pipe on a 45° roof pitch
- Ozone and UV resistant
- 20 Year warranty
- EPDM Black BAL Rating 12.5



Aquaseal Drainer	Black EPDM Code	Metric: Pipe Size (25° roof pitch)	Metric: Pipe Size (45° roof pitch)	Imperial: Pipe Size (25° roof pitch)	Imperial: Pipe Size (45° roof pitch)	Base size	Max retrofit clips required	Box Qty
No.6	ADE6B100-200	100-200mm	100-200mm	4" - 8"	4" - 8"	370x370mm	9	10

EPDM will withstand constant temperatures of -40°C (-40°F) to 115°C (239°F) \*BAL rated for EPDM Black

## Installation Overview





**AQUASEAL**



# Wall Flasher

## Benefits

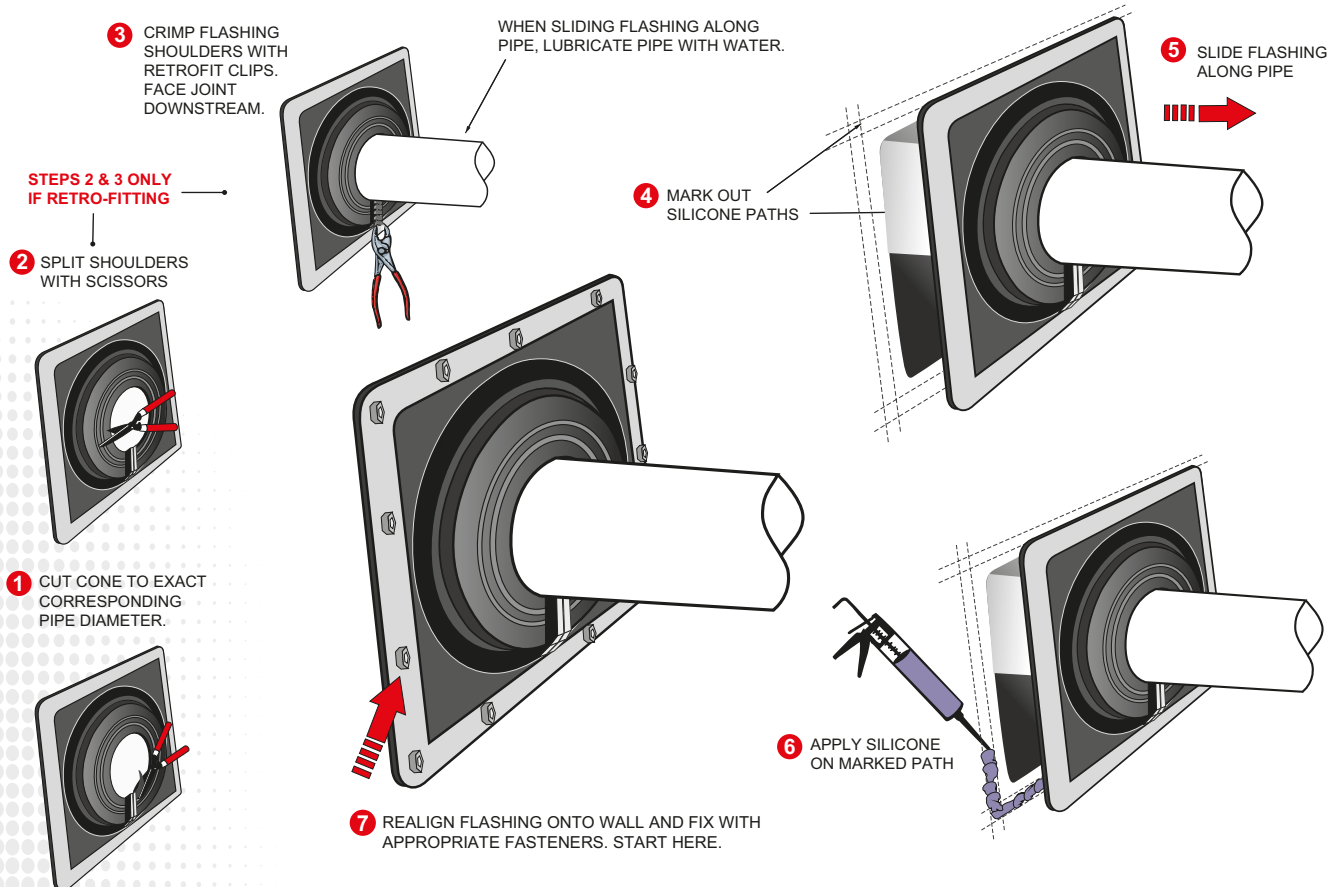
- Suitable for horizontal wall pipe installations
- Suitable for both standard and retrofit application
- Blocks drafts, dirt and insects to keep working environment clean
- Ozone and UV resistant
- Seal open holes in wall/roof
- 20 Year warranty
- EPDM Black BAL Rating 12.5



Aquaseal Wall Flasher	Black EPDM Code	Grey EPDM Code	Metric: Pipe Size	Imperial: Pipe Size	Base size	Max retrofit clips required	Box Qty
No.3	AWE3B0-125	AWE3G0-125	0-125mm	0" - 5"	210x210mm	4	10

EPDM will withstand constant temperatures of -40°C (-40°F) to 115°C (239°F) \*BAL rated for EPDM Black

## Installation Overview







## LDX

### Benefits

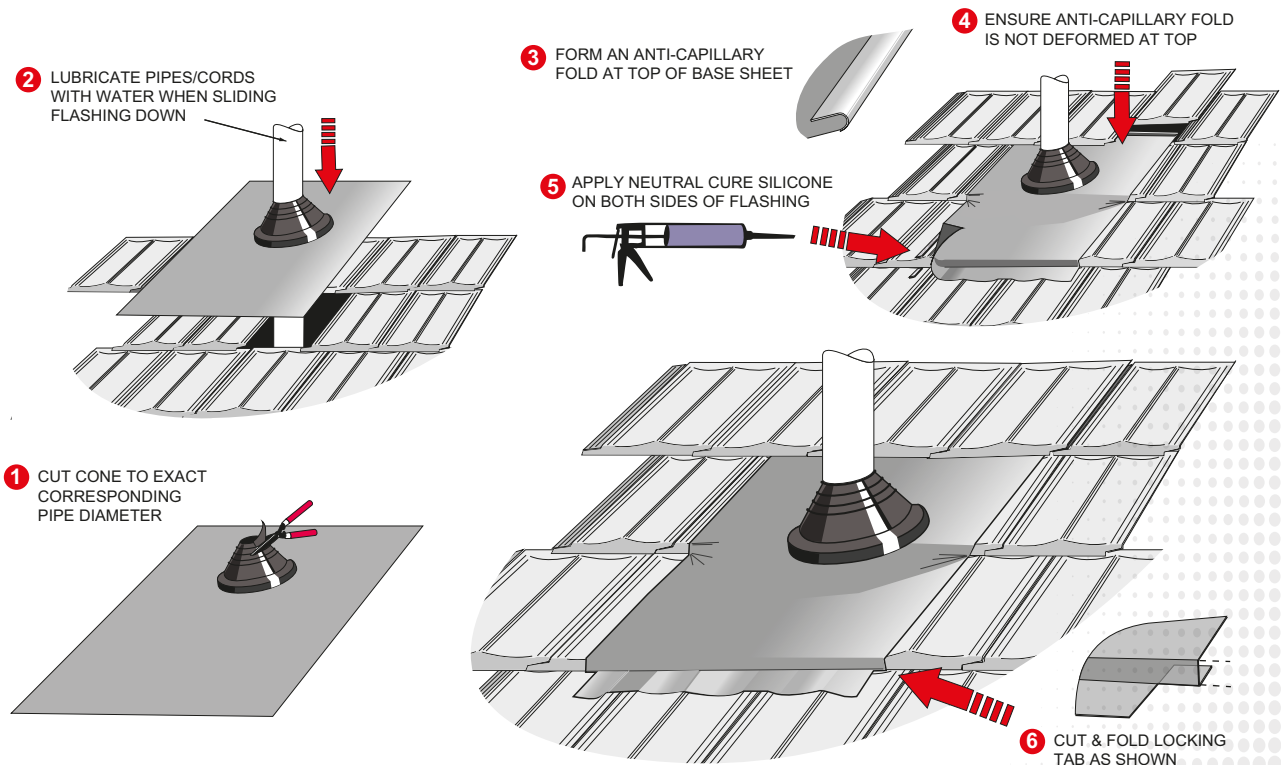
- An alternative to lead flashings
- Non-toxic – Unlike traditional lead flashings, Versatile LDX does not contain any heavy metals
- Light weight – LDX is much lighter than lead pipe flashings and therefore easier to use
- 20 year warranty



Versatile LDX	Black EPDM Code	Red Silicone Code	Metric: Pipe Size (25° roof pitch)	Metric: Pipe Size (45° roof pitch)	Imperial: Pipe Size (25° roof pitch)	Imperial: Pipe Size (45° roof pitch)	Base size
No. 1 (Small)	VLDXB5-40S	VLDXR5-40S	5-50mm	5-40mm	1/8" - 2"	1/8" - 1 1/2"	300x450mm
No. 1	VLDXB5-40	VLDXR5-40	5-50mm	5-40mm	1/8" - 2"	1/8" - 1 1/2"	400x500mm
No. 2	VLDXB12-125	VLDXR12-125	12-125mm	12-90mm	1/2" - 5"	1/2" - 3 1/2"	400x500mm
No. 2 (Pre-Cut)	VLDXB50-90	VLDXR50-90	50-90mm	50-65mm	2" - 3 1/2"	2" - 2 1/2"	400x500mm
No. 3	VLDXB100-150	VLDXR100-150	100-150mm	100-110mm	4" - 6"	4" - 4 1/2"	400x500mm
No. 7	VLDXB150-300	VLDXR150-300	150-300mm	150-255mm	6" - 11 1/2"	6" - 10"	600x850mm

EPDM will withstand constant temperatures of -40°C (-40°F) to 115°C (239°F) Silicone will withstand constant temperatures of -50°C (-58°F) to 200°C (392°F)

## Installation Overview





**AQUASEAL  
VERSATILE**

# Enviro-Lead

## Benefits

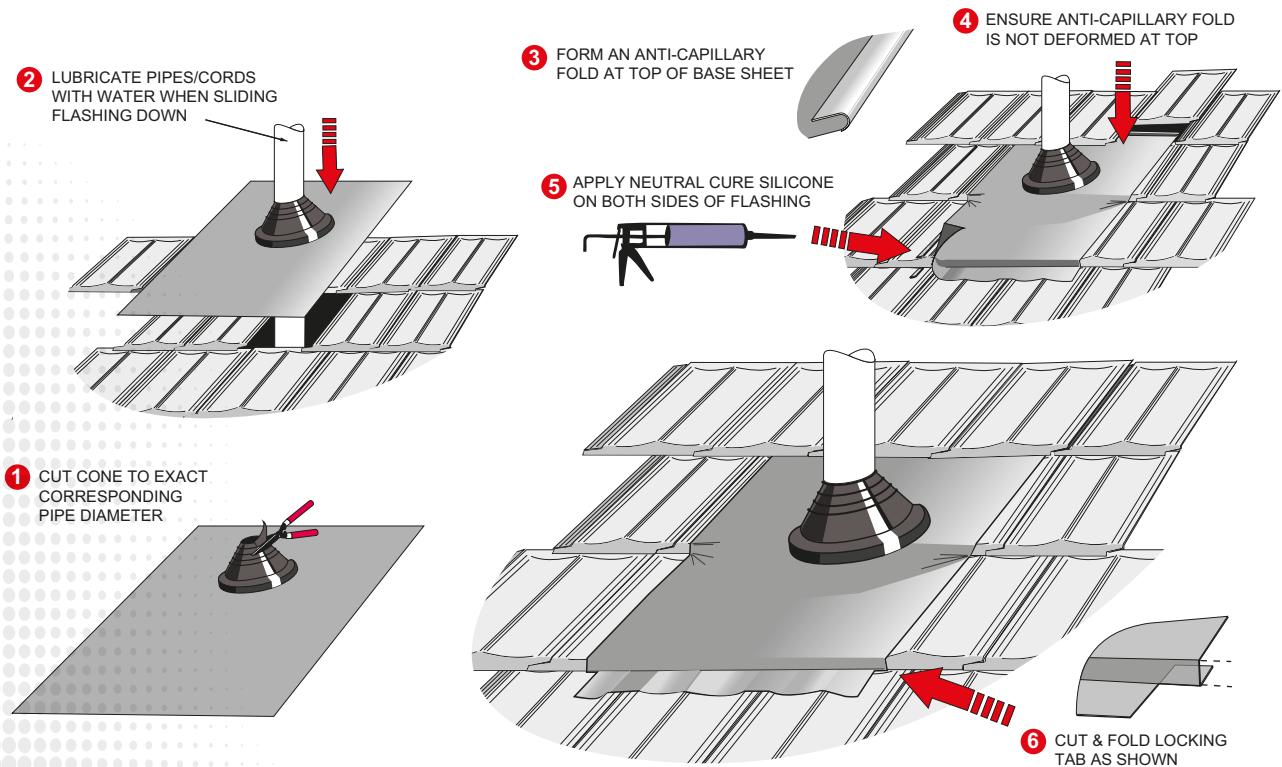
- Acrylic coating helps prevent lead leaching
- Can be painted to match roof colour with acrylic house paint
- Polymer is Ozone and UV resistant
- Safe to handle
- 20 year warranty



Versatile Enviro-Lead	Black EPDM Code	Red Silicone Code	Metric: Pipe Size (25° roof pitch)	Metric: Pipe Size (45° roof pitch)	Imperial: Pipe Size (25° roof pitch)	Imperial: Pipe Size (45° roof pitch)	Base size
No.1	VLEC1B5-40	VLSC1R5-40	5-50mm	5-40mm	½" - 2"	½" - 1½"	490x410mm
No.2	VLES2B12-125	VLSS2R12-125	12-125mm	12-90mm	½" - 5"	½" - 3½"	490x410mm
No.2 (Pre-Cut)	VLEC2B50-90	VLSC2R50-90	50-90mm	50-65mm	2" - 3½"	2" - 2½"	600x450mm
No.3	VLEC3B100-150	VLSC3R100-150	100-150mm	100-110mm	4" - 6"	4" - 4½"	600x450mm
No.7	VLEC7B150-300	VLSC7R150-300	150-300mm	150-255mm	6" - 11½"	6" - 10"	850x600mm

EPDM will withstand constant temperatures of -40°C (-40°F) to 115°C (239°F) Silicone will withstand constant temperatures of -50°C (-58°F) to 200°C (392°F)

## Installation Overview







**AQUASEAL  
VERSATILE**

# Natural Lead

## Benefits

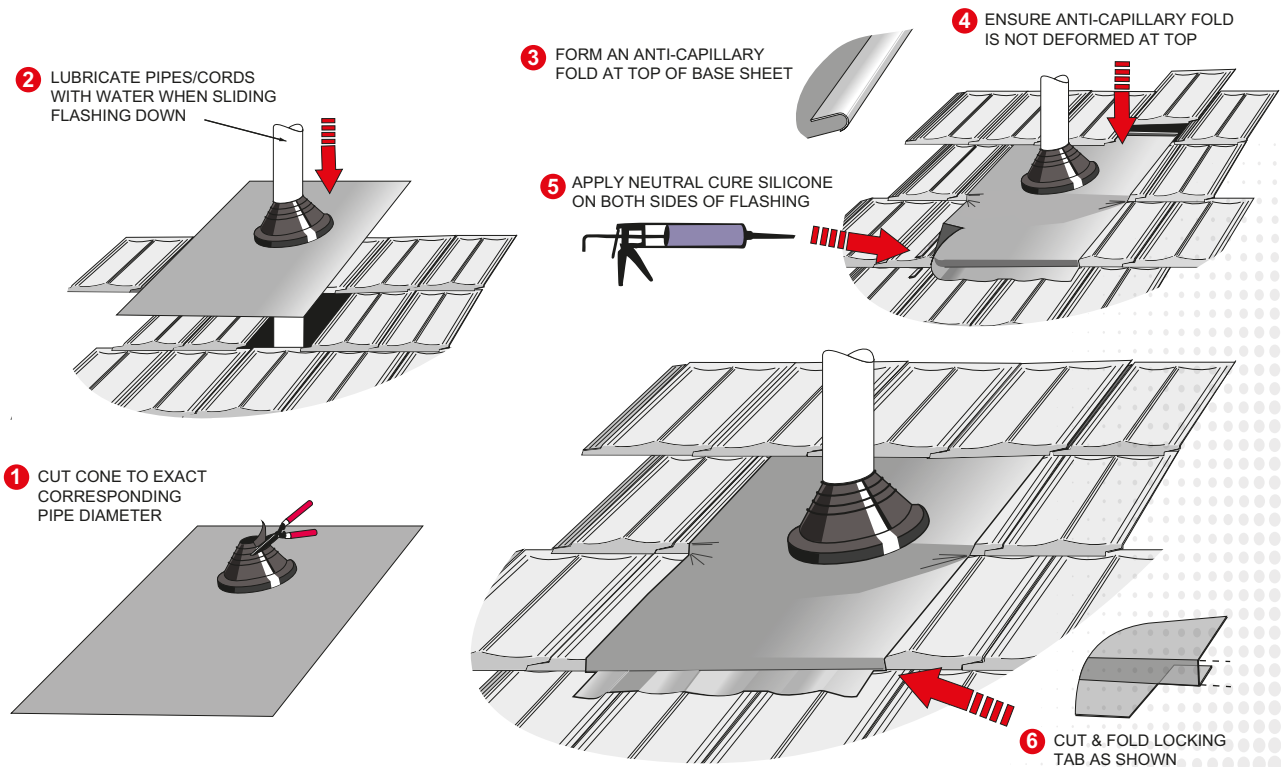
- Can be painted to match roof colour with acrylic house paint
- Polymer is Ozone and UV resistant
- 20 year warranty



Versatile Natural Lead	Black EPDM Code	Metric: Pipe Size (25° roof pitch)	Metric: Pipe Size (45° roof pitch)	Imperial: Pipe Size (25° roof pitch)	Imperial: Pipe Size (45° roof pitch)	Base size
No.1	VLEM1B20-100	20-100mm	20-75mm	¾" - 4"	¾" - 3"	490x410mm
No.7	VLEM7B180-270	180-270mm	180-225mm	7" - 10½"	7" - 9"	700x600mm

EPDM will withstand constant temperatures of -40°C (-40°F) to 115°C (239°F)

## Installation Overview







**AQUASEAL  
VERSATILE**

# Enviro-Lead Square Flasher

## Benefits

- Can be painted to match roof colour with acrylic house paint
- Flash Square pipes from 40-100mm
- Polymer is Ozone and UV resistant
- Safe to handle
- 20 year warranty



Black EPDM Code	Metric: Pipe Size (25° roof pitch)	Metric: Pipe Size (45° roof pitch)	Imperial: Pipe Size (25° roof pitch)	Imperial: Pipe Size (45° roof pitch)	Base size
VLQE3B40-100	40-100mm	40-75mm	1½" - 4"	1½" - 3"	600x450mm

\*EPDM will withstand constant temperatures of -40°C (-40°F) to 115°C (239°F)

# Aluminium Square Flasher

## Benefits

- 99.9% pure grade aluminium
- Can be painted to match roof colour with acrylic house paint
- Flash Square pipes from 40-100mm
- Polymer is Ozone and UV resistant
- 20 year warranty



Black EPDM Code	Metric: Pipe Size (25° roof pitch)	Metric: Pipe Size (45° roof pitch)	Imperial: Pipe Size (25° roof pitch)	Imperial: Pipe Size (45° roof pitch)	Base size
VAQE3B40-100	40-100mm	40-75mm	1½" - 4"	1½" - 3"	600x450mm

\*EPDM will withstand constant temperatures of -40°C (-40°F) to 115°C (239°F)



**AQUASEAL  
VERSATILE**

# Aluminium Standard

## Benefits

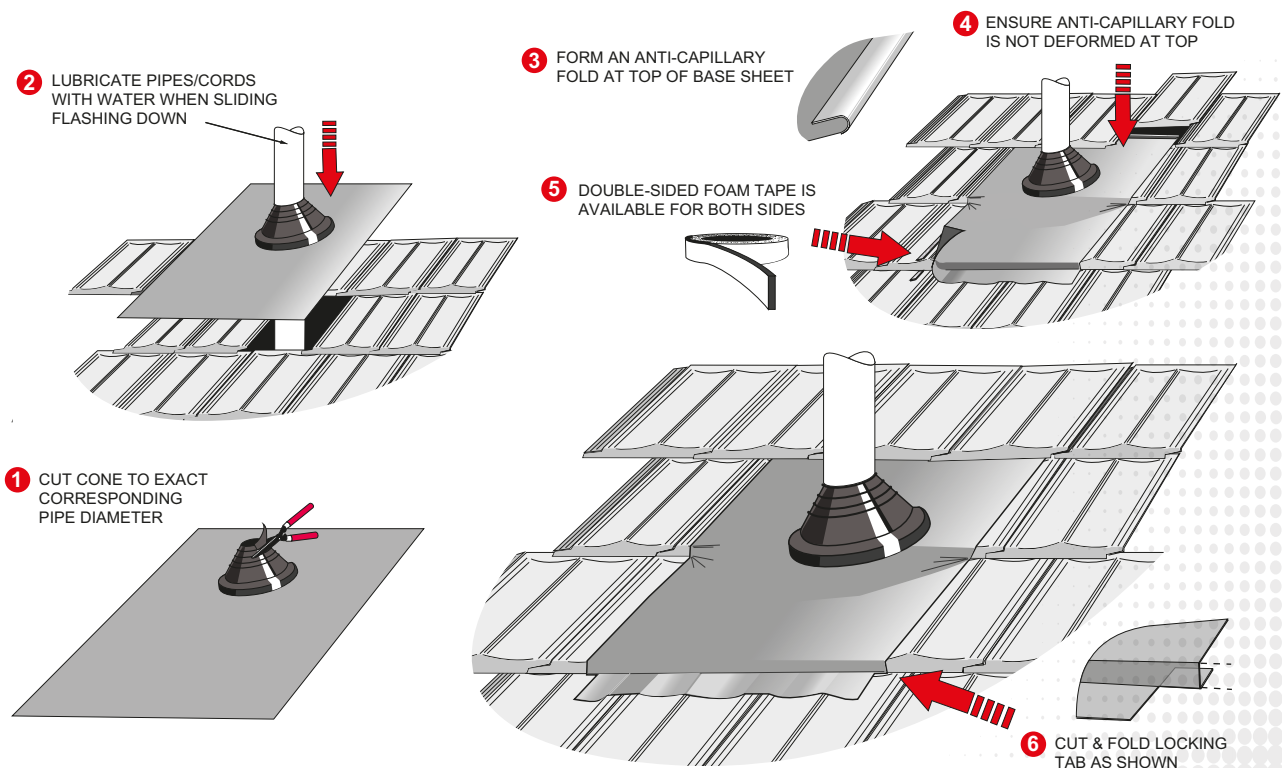
- 99.9% pure grade aluminium
- Can be painted to match roof colour with acrylic house paint
- Polymer is Ozone and UV resistant
- 20 year warranty



Versatile Aluminium Standard	Black EPDM Code	Red Silicone Code	Metric: Pipe Size (25° roof pitch)	Metric: Pipe Size (45° roof pitch)	Imperial: Pipe Size (25° roof pitch)	Imperial: Pipe Size (45° roof pitch)	Base size
No.1	VAECT1B5-40	VASCT1R5-40	5-50mm	5-40mm	½" - 2"	½" - 1½"	600x450mm
No.2	VAEST2B12-125	VASST2R12-125	12-125mm	12-90mm	½" - 5"	½" - 3½"	600x450mm
No.2 (Pre-Cut 2")	VAECT2B50-90	VASCT2R50-90	50-90mm	50-65mm	2" - 3½"	2" - 2½"	600x450mm
No.2 (Pre-Cut 4")	VAEFT2B100-125	VASFT2R100-125	100-125mm	100-100mm	4" - 5"	4" - 4"	600x450mm
No.3	VAEFT3B100-165	VASFT3R100-165	100-165mm	100-125mm	4" - 6½"	4" - 5"	600x450mm
No.4	VAEFT4B50-170	VASFT4R50-170	50-170mm	50-140mm	2" - 6¾"	2" - 5½"	600x450mm
No.5	VAEMT5B175-280	VASMT5R175-280	175-280mm	175-250mm	7" - 11"	7" - 10"	800x600mm
No.7	VAEMT7B180-270	VASMT7R180-270	180-270mm	180-225mm	7" - 10½"	7" - 9"	800x600mm
No.8	VAEMT8B180-350	VASMT8R180-350	180-350mm	180-275mm	7" - 13¾"	7" - 10⅝"	800x600mm

EPDM will withstand constant temperatures of -40°C (-40°F) to 115°C (239°F) Silicone will withstand constant temperatures of -50°C (-58°F) to 200°C (392°F)

## Installation Overview







**AQUASEAL  
VERSATILE**

# Aluminium A° Series

## Benefits

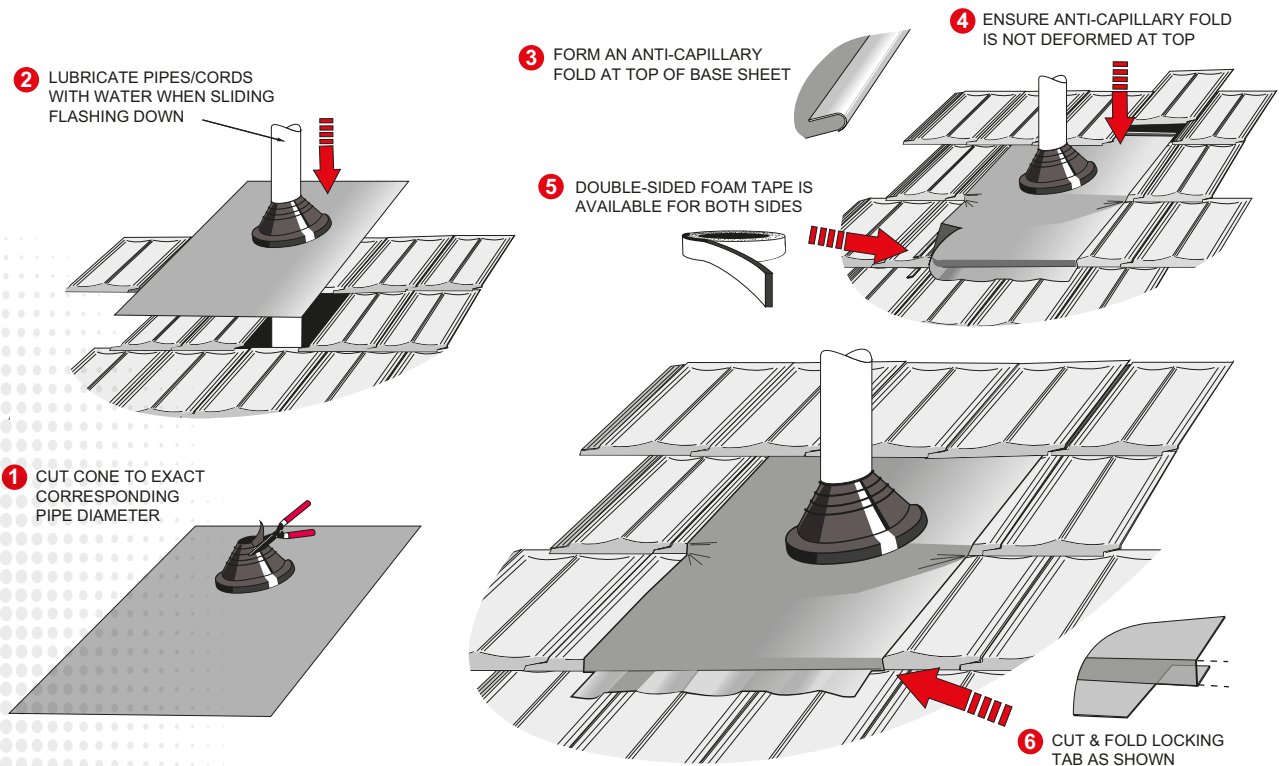
- 99.9% pure grade aluminium
- Great for extreme and normal roof pitches
- Can be painted to match roof colour with acrylic house paint
- Polymer is Ozone and UV resistant
- 20 year warranty



Versatile Aluminium A° Series	Black EPDM Code	Red Silicone Code	Metric: Pipe Size (25° roof pitch)	Metric: Pipe Size (45° roof pitch)	Imperial: Pipe Size (25° roof pitch)	Imperial: Pipe Size (45° roof pitch)	Base size
No.2	VA23B100-225	VA23R100-225	100-225mm	100-225mm	4" - 9"	4" - 9"	600x500mm
No.4	VA15B175-380	VA15R175-380	175-380mm	175-350mm	7" - 15"	7" - 14"	900x700mm

EPDM will withstand constant temperatures of -40°C (-40°F) to 115°C (239°F) Silicone will withstand constant temperatures of -50°C (-58°F) to 200°C (392°F)

## Installation Overview







**AQUASEAL  
VERSATILE**

# Flexatile Lead Free

## Benefits

- Can be painted to match roof colour with acrylic house paint
- Light weight, non toxic, non corrosive
- Drinking water safe
- Polymer is Ozone and UV resistant
- 20 year warranty

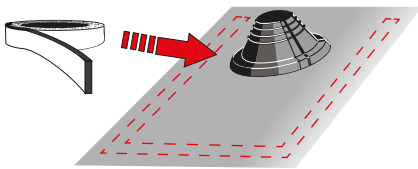


Versatile Flexatile Lead Free	Black EPDM Code	Metric: Pipe Size (25° roof pitch)	Metric: Pipe Size (45° roof pitch)	Imperial: Pipe Size (25° roof pitch)	Imperial: Pipe Size (45° roof pitch)	Base Colour	Base size
<b>No.1 (Terracotta)</b>	VWEC1T5-40	5-50mm	5-40mm	½" - 2"	½" - 1½"	Terracotta	450x280mm
<b>No.1 (Black)</b>	VWEC1B5-40	5-50mm	5-40mm	½" - 2"	½" - 1½"	Black	450x280mm
<b>No.2</b>	VWES2B12-125	12-125mm	12-90mm	½" - 5"	½" - 3½"	Black	500x370mm
<b>No.2 (Pre-Cut)</b>	VWEC2B50-90	50-90mm	50-65mm	2" - 3½"	2" - 2½"	Black	500x370mm
<b>No.3</b>	VWEC3B100-150	100-150mm	100-110mm	4" - 6"	4" - 4½"	Black	500x370mm

\*EPDM will withstand constant temperatures of -40°C (-40°F) to 115°C (239°F)

## Installation Overview

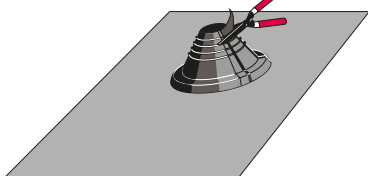
- 3** PLACE FOAM TAPE ON THE UNDERSIDE OF THE BASE



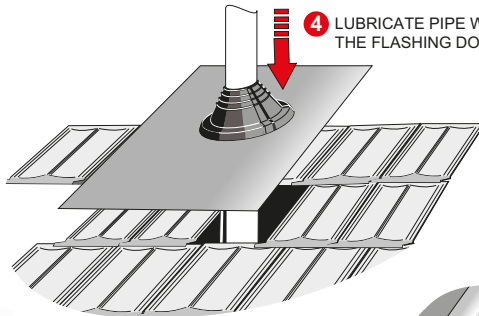
- 2** DOUBLE-SIDED GLUED FOAM TAPE IS RECOMMENDED FOR THE INITIAL SHEET-TO-TILE BONDING. ENSURE BOTH SURFACES ARE CLEAN AND DRY BEFOREHAND



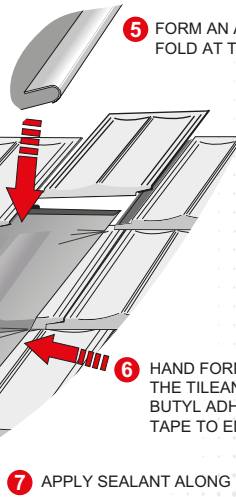
- 1** CUT THE RUBBER CONE AT LEAST 15mm SMALLER THAN PIPE O.D. WITH A SHARP KNIFE OR SCISSORS



- 4** LUBRICATE PIPE WITH WATER AND SLIDE THE FLASHING DOWN THE PIPE



- 5** FORM AN ANTI-CAPILLARY FOLD AT TOP OF BASE SHEET



- 6** HAND FORM THE BASE ALL AROUND THE TILE AND APPLY PRESSURE TO THE BUTYL ADHESIVE SIDE STRIP AND FOAM TAPE TO ENSURE MAXIMUM SEAL

- 7** APPLY SEALANT ALONG EDGES



# PIPE FLASHING ACCESSORIES



## Retrofit Clips

Aquarius retrofit clips are designed for any Aquaseal flashing that incorporates the retrofit rib.

### Benefits

- Retrofit clips allow pipe flashings to be wrapped around a pipe when traditional installation methods do not work

Type	Code	Pack Qty
Aluminium	ALC01/50	50
Stainless Steel	SSC01/50	50



## Double-sided Foam Tape

The double-sided foam tape is recommended for all Aluminium and Flexatile Versatiles. It helps secure the flashing to tiles. (See Aluminium and Flexatile Versatile installation instructions)

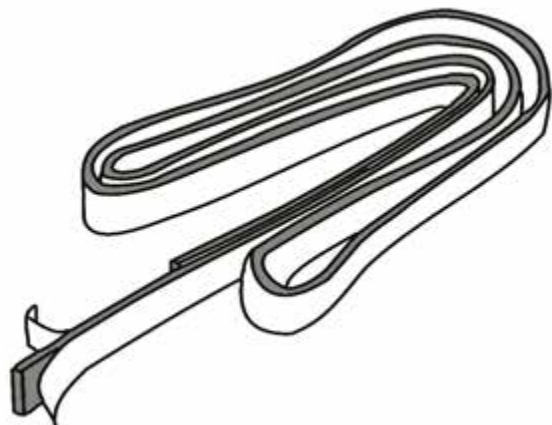
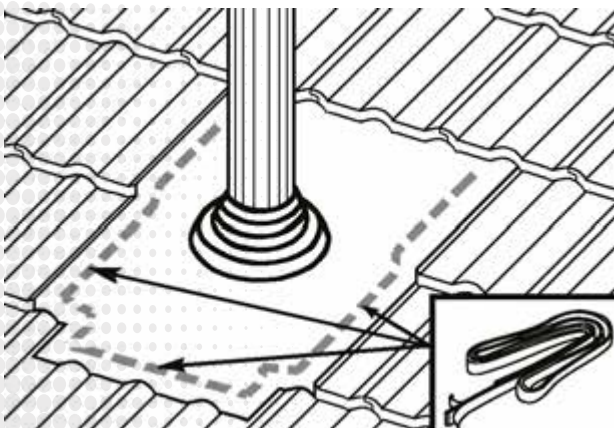
### Benefits

- Double-sided Foam Tape helps secure flashing to the tile surface

Code	Material	Type Size	Pack Qty
FTG0001	PE	1.5m	5



## Installation Overview







# Expansion Strip Joint

The Expansion Strip Joint has been designed to install as an expansion joint for Industrial Box gutters.

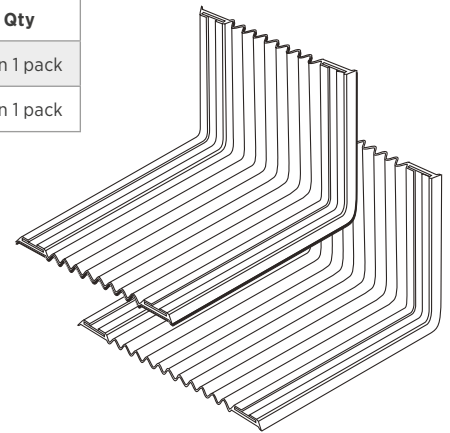
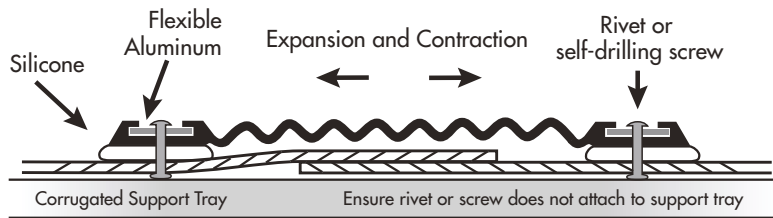
It replaces the need to box the end of two adjoining gutters and also the need to form a bridge to span the boxed ends.

## Benefits

- Water can flow across to the adjoining gutter eliminating flooding



Code	Width	Length	Expansion Range	Support Metal	Pack Qty
ESJ145-5	145mm	5m	145 to 175mm	Aluminium	5m roll in 1 pack
ESJ200-5	200mm	5m	200 to 250mm	Aluminium	5m roll in 1 pack



## Installation Overview



**1** Mark the position of the support tray alleys on the gutter to allow for rivet installation clearance.



**2** Clamp the Expansion Strip Joint into position and press into corners of the box gutter with square object (e.g. piece of wood).



**3** Hold the Expansion Strip Joint in place whilst drilling rivet holes. Place rivets temporarily in position to stop flashing moving whilst drilling additional holes.



**4** Remove the flashing and pull out rivets to brush away any metal swarf.



**5** Apply a neutral cure silicone bead along the line of rivet holes on both box gutters.



**6** Pop rivet the Expansion Strip Joint in place and smooth over the Silicone to complete installation.





# Multi-purpose Rubber Ties

Aquarius Rubber Ties are UV and Ozone protected to prolong product life and are made from a specially formulated rubber compound that can withstand constant stretching and recoil action whilst maintaining tension under load. Safer than the traditional “Ocky” strap as there are no dangerous metal hooks. We recommend stretching them no more than 30-50% of their length for best performance and to maximise life expectancy.



## Croc Strap Multi-purpose Tie

Part No: RTC10  
Size: 580mm length

### Benefits

- No dangerous metal hooks
- Daisy chain for longer lengths
- Eliminate tangled electrical leads
- Tie down PVC pipes & conduits
- Maintain tension under load
- UV protected to prolong product life



## Tarp Tie Dog Bone 420mm

Part No: TTD420  
Size: 420mm length x 50mm loops

### Benefits

- No dangerous metal hooks
- Maintain tension under load
- Extendable rope can be tensioned
- Designed for high strain loads
- UV protected to prolong product life



## Tarp Tie Dog Bone 630mm

Part No: TTD630  
Size: 630mm length x 50mm loops

### Benefits

- No dangerous metal hooks
- Maintain tension under load
- Extendable rope can be tensioned
- Designed for high strain loads
- UV protected to prolong product life



## Tarp Tie Standard 330mm

Part No: TTS330  
Size: 330mm length and 12mm thick

### Benefits

- No dangerous metal hooks
- Safer than the old ‘Ocky Strap’
- Maintain tension under load
- Extendable rope can be tensioned
- UV protected to prolong product life



**SPECIALISED  
PRODUCTS**

# Anti Vibration Waffle Pads

Anti Vibration Waffle Pads are suitable for use underneath equipment and/or for support stands to eliminate unnecessary equipment vibration associated with metal to metal contact.

## Benefits

- Reduces vibration associated with metal to metal contact
- Versatility of use – applicable for generators, motors, machinery and air conditioning plants
- Can be used as an anti-slip mat for utility trays



Code	Size	Type	Material	Pack Qty
WP0000	450 X 450 X 8mm	Sheet	Rubber	10
WP0001	550 x 550 x 9mm	Sheet	Rubber	10
WP0002	550 x 550 x 15mm	Sheet	Rubber	5
WP0001A	110 x 550mm	Strip	Rubber	5
WP0001D	50 x 100mm	Rectangle with centre hole	Rubber	32





# PIPE COUPLINGS



## Premium Pipe Couplings

Used for sewage, drainage and other low pressure application, Pipe Couplings connect waste and drainage pipes of same or different sizes and materials.

### Benefits

- Manufactured to AS/NZS 4327
- Product Licence No. WMKT02656
- Connect waste and drainage pipes of same or different sizes and materials
- Connectors can flex with earth movement to maintain the seal
- Only 316 stainless steel clamps and housings are used
- Use for sewage, drainage and other low pressure application
- Max Temperature Range:  
Continuous: 38°C Intermittent: 60°C
- Individually labelled and batch controlled



### Pipe Couplings (PVC to PVC)

Part No.	Suits	Pack Qty
PC40	40mm PVC to 40mm PVC	72
PC50	50mm PVC to 50mm PVC	50
PC65	65mm PVC to 65mm PVC	12
PC80	80mm PVC to 80mm PVC	18
PC90	90mm PVC to 90mm PVC	6
PC100	100mm PVC to 100mm PVC	6
PC150	150mm PVC to 150mm PVC	2



### Pipe Couplings (PVC to E/ware/Cast Iron)

Part No.	Suits	Pack Qty
PC100EW	100mm PVC to 100mm E/ware/Cast Iron	6
PC150EW	150mm PVC to 150mm E/ware/Cast Iron	2

### Installation Overview

- Slide pipe spigot ends into coupling then tighten 316 stainless Steel bands to 5Nm torque.
- Test for leaks before backfilling or concealing. For sewer or drain use only – Not for potable water. Couplings are made from a specially formulated rubber compound that complies with AS1646.3 Type A.
- Installation of these couplings is subject to the requirements of regulatory authorities.





## Octopus Pipe Couplings

Octopus Pipe Couplings can be used on a variety of pipe materials, including PVC, copper, cast iron, clay, fibreglass and steel. Their versatility allows them to connect waste and drainage pipes of same or different sizes/materials and can be used in both under or above ground applications. **Note: Not suitable for potable water**

### Benefits

- Manufactured to AS/NZS 4327
- Product Licence No. WMKT022696
- Connect waste and drainage pipes of same or different sizes and materials
- Couplings can flex with earth movement to maintain seal
- Only 316 stainless steel clamps and housings are used
- Use for sewage, drainage and other low-pressure applications
- Max Temperature Range:  
Continuous: 38°C Intermittent: 60°C
- Easy way to connect misaligned pipes
- No special tools required - just use a screw driver or torque wrench
- Ideal for emergency repairs

### Regular PVC Couplings

Part No.	Suits	Pack Qty
RC32	32mm PVC to 32mm PVC	100
RC40	40mm PVC to 40mm PVC	100
RC50	50mm PVC to 50mm PVC	100
RC65	65mm PVC to 65mm PVC	50
RC80	80mm PVC to 80mm PVC	50
RC90	90mm PVC to 90mm PVC	50
RC100	100mm PVC to 100mm PVC	50
RC150	150mm PVC to 150mm PVC	15

### PVC Clay Couplings

Part No.	Suits	Pack Qty
RCC100	100mm PVC to 100mm E/ware/	30



### Installation Overview

- Make sure pipe is adequately supported
- Loosen, but do not completely remove the steel clamps
- Fit coupling over both pipe ends
- Tighten clamps to 6.7 Nm torque
- Installation is subject to the requirements of the regulatory authority



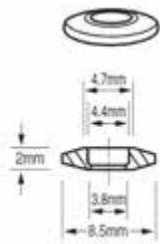
# WASHERS AND GROMMETS

## Moulded Washers

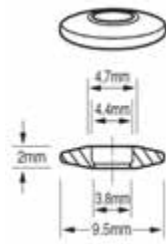
Aquarius stocks a range of moulded washers including the 10/14 gauge 26mm OD moulded grey dome washer. This dome washer is ideal for securing polycarbonate or fibreglass roofing sheets. The washer forms to the shape of the corrugated sheeting providing a watertight seal.



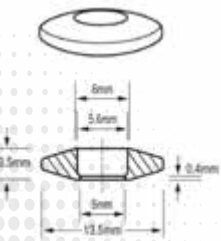
Code	Type	Suits	O.D.	Colour
W8MB8.5	Moulded	8g	8.5mm	Black
W10MB9.5	Moulded	10g	9.5mm	Black
W12MB13.5	Moulded	12g	13.5mm	Black
W14MB12	Moulded	14g	12mm	Black
W12/14MB30	Kliplok	12/14g	30mm	Black
W12/14MB36	Spandek	12/14g	36mm	Black
W8/12MB17	Fladome	8/12g	17mm	Black
W10/14DLG25	Dome	10/14g	25mm	Light Grey
W12/14DB19	Raised Top	12/14g	19mm	Black
W12/14DLG32	Dome	12/14g	32mm	Light Grey



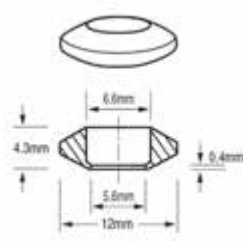
W8MB8.5



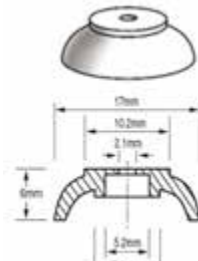
W10MB9.5



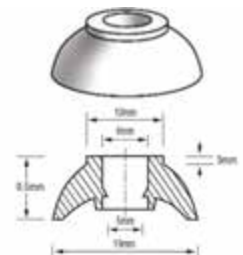
W12MB13.5



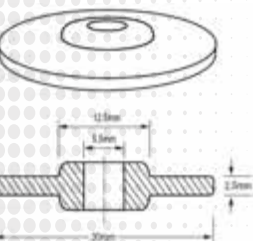
W14MB12



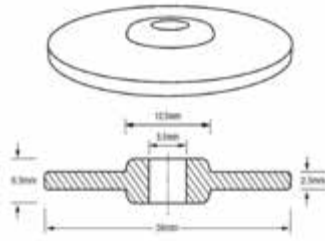
W8/12MG17



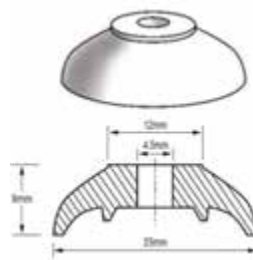
W12/14DB19



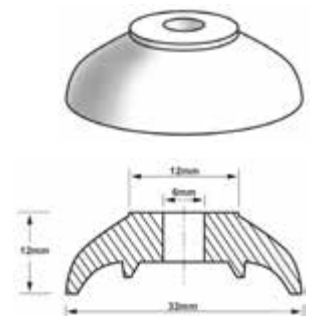
W12/14MB30



W12/14MB36



W10/14DLG25



W12/14DLG32

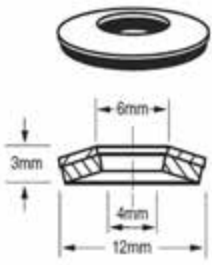




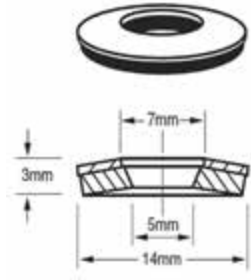
# WASHERS AND GROMMETS

## Bonded Washers

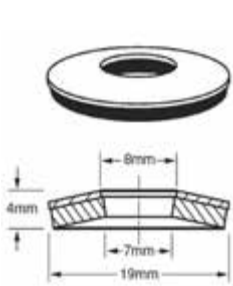
Bonded washers are manufactured using EPDM rubber bonded to aluminium, galvanised or stainless steel support material.



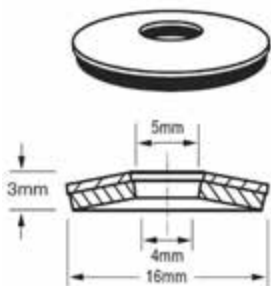
W10/12BAG12  
W10/12BGB12  
W10/12BSB12



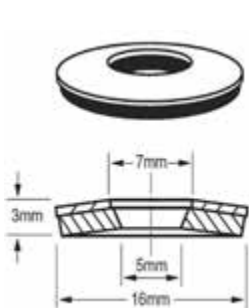
W12/14BAG14  
W12/14BGG14  
W12/14BSG14



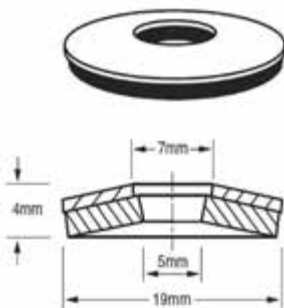
W8MMBAG19  
W8MMBGG19



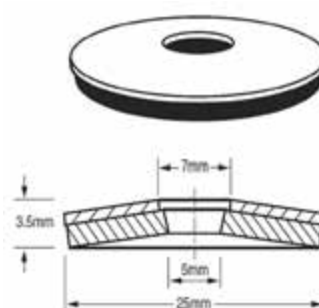
W8/10BAG16  
W8/10BGG16



W12/14BAG16  
W12/14BGB16  
W12/14BSG16



W12/14BAG19  
W12/14BGB19  
W12/14BSG19



W12/14BAG25  
W12/14BGG25  
W12/14BSG25

Code	Type	Support Material	Suits	O.D.	Colour
W8MMBAG19	Bonded	Aluminium	8mm	19mm	Grey
W8MMBGG19	Bonded	Galvanised	8mm	19mm	Grey
W8/10BAG16	Bonded	Aluminium	8/10g	16mm	Grey
W8/10BGG16	Bonded	Galvanised	8/10g	16mm	Grey
W10/12BAG12	Bonded	Aluminium	10/12g	12mm	Grey
W10/12BGB12	Bonded	Galvanised	10/12g	12mm	Black
W10/12BSB12	Bonded	Stainless Steel	10/12g	12mm	Black
W12/14BAG14	Bonded	Aluminium	12/14g	14mm	Grey
W12/14BGG14	Bonded	Galvanised	12/14g	14mm	Grey
W12/14BSG14	Bonded	Stainless Steel	12/14g	14mm	Grey
W12/14BAG16	Bonded	Aluminium	12/14g	16mm	Grey
W12/14BGB16	Bonded	Galvanised	12/14g	16mm	Black
W12/14BSG16	Bonded	Stainless Steel	12/14g	16mm	Grey
W12/14BAG19	Bonded	Aluminium	12/14g	19mm	Grey
W12/14BGB19	Bonded	Galvanised	12/14g	19mm	Black
W12/14BSG19	Bonded	Stainless Steel	12/14g	19mm	Grey
W12/14BAG25	Bonded	Aluminium	12/14g	25mm	Grey
W12/14BGG25	Bonded	Galvanised	12/14g	25mm	Grey
W12/14BSG25	Bonded	Stainless Steel	12/14g	25mm	Grey





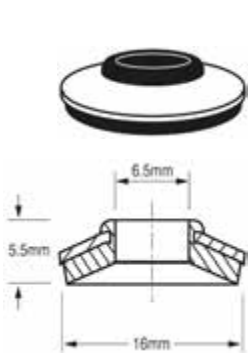
# WASHERS AND GROMMETS

## Embossed Washers

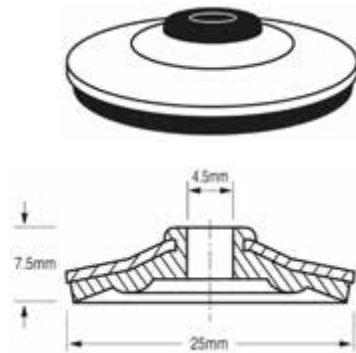
Embossed washers are manufactured from EPDM rubber with either aluminium or galvanised support material. This design provides a sealing surface for both the screw head and the metal support material.



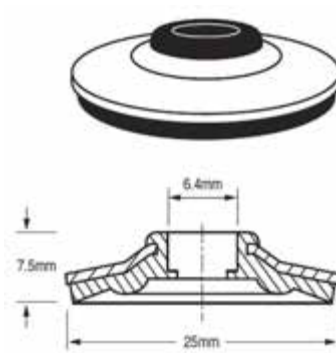
Code	Type	Support Material	Suits	O.D.	Colour
W14EGB16	Embossed	Galvanised	14g	16mm	Black
W10EGB25	Embossed	Galvanised	10g	25mm	Black
W12/14EAB25	Embossed	Aluminium	12/14g	25mm	Black
W12/14EGB25	Embossed	Galvanised	12/14g	25mm	Black



W14EGB16



W10EGB25

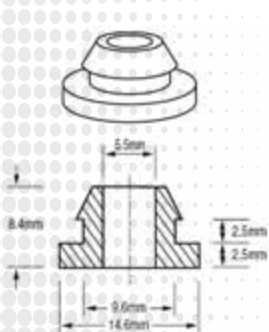


W12/14EAB25 & W12/14EGB25

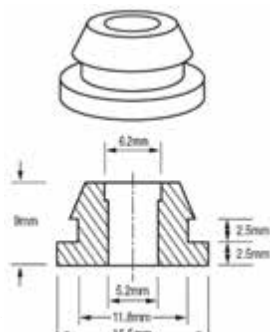
## Grommets

Aquarius Grommets are manufactured from EPDM rubber, and are made in three sizes to suit your required needs.

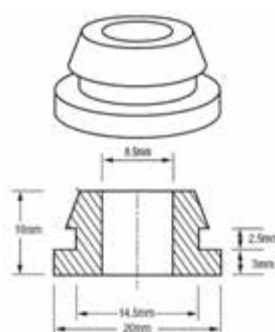
Code	Type	I.D.	O.D.	Colour
SOLG45	Grommet	5.5mm	14.6mm	Black
SOLG55	Grommet	6.2mm	16.5mm	Black
SOLG85	Grommet	8.5mm	20mm	Black



SOLG45



SOLG55



SOLG85







**AQUARIUS**  
**DISTRIBUTION**

Tel: (+613) 9763 0044 Fax: (+613) 9764 1266

Email: [sales@aquariusdist.com.au](mailto:sales@aquariusdist.com.au) [www.aquariusdist.com.au](http://www.aquariusdist.com.au)